



**NEW XIANG YI**  
**INTERNATIONAL LTD.**



Fisons ARL 3460 Optical Emission Spectrometer 分光儀  
本公司產品皆經過分光儀成份分析合格方可生產



High Purity Zinc Ingot

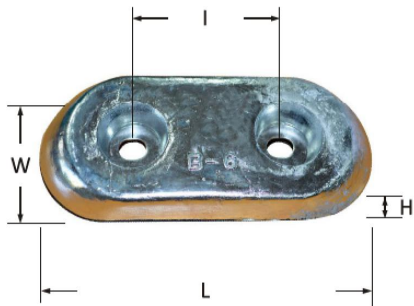


High Purity Aluminum Ingot

## 主要產品 (Major Products)

### 船殼用鋅/鋁板 (Zinc/Aluminum Anodes for Ship Hulls)

#### 螺絲安裝型 (Bolt On Type)



型號 (Type)	尺寸 Size (mm) 高x寬x長 HxWxL (孔距/適用螺絲)	重量(ZN/AL) Weight (Kg) ± 3%
B-1	20x70x150(75 / M12)	1.2 / 0.5
B-2	25x70x150(75 / M12)	1.4 / 0.6
B-3	20x100x200(110 / M12)	2.4 / 1.1
B-4	30x100x200(110 / M12)	3.5 / 1.5
B-5	32x100x200(110 / M12)	4.0 / 1.6
B-5L	45x100x200(110 / M12)	5.0 / 2.1
B-8	25x150x300(160 / M16)	7.2 / 3.0
B-9	30x150x300(160 / M16)	8.2 / 3.5
B-10	40x150x300(160 / M16)	11.0 / 4.5
B-10L	40x150x380(160 / M16)	14.9 / 6.0
B-12	50x150x300(160 / M16)	14.1 / 5.7
B-17	75x150x300(160 / M16)	21.4 / 8.7
B-24	50x200x300(160 / M16)	20.3 / 7.9
B-27	65x200x300(160 / M16)	25.4 / 10.0
B-29	75x200x300(160 / M16)	29.8 / 11.4
BW-14	45x100x500(260/M12)	14.1

型號 (Type)	尺寸 Size (mm) 高x寬x長 HxWxL (孔距/適用螺絲)	重量(ZN/AL) Weight (Kg) ± 3%
B-5R	32x100x250(110 / M14)	4.0 / 1.6
B-6	35x100x250(110 / M14)	4.5 / 1.8
B-6L	40x100x250(110 / M14)	5.0 / 2.0
B-6LL	40x120x280(110 / M14)	7.0 / 2.9



BM TYPE



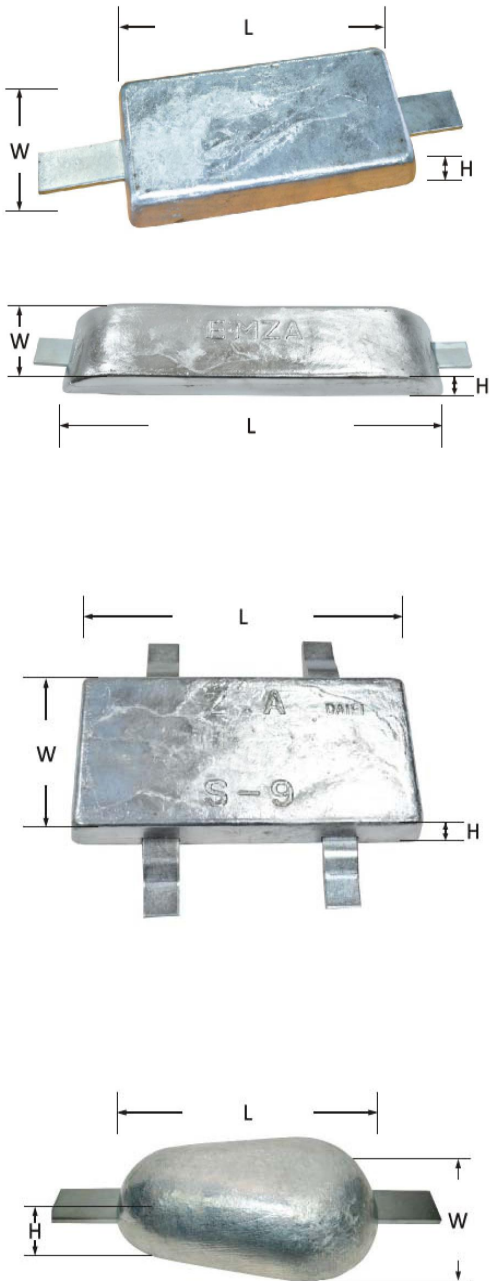
BR TYPE



1/2B TYPE

## 船殼用鋅/鋁板 (Zinc/Aluminum Anodes for Ship Hulls)

### 銲接安裝型 (Welded Type)



型號 (Type)	尺寸 Size (mm) 高x寬x長 HxWxL	重量(ZN/AL) Weight (Kg) ± 3%
S-2	25x70x150	1.9/0.9
S-4	30x100x200	4.1 / 1.7
S-8	25x150x300	7.9 / 3.2
S-9	30x150x300	9.2
S-10	40x150x300	12.3/4.7
S-12	50x150x300	15.4
S-20	45x115x500	17.8 / 7.4

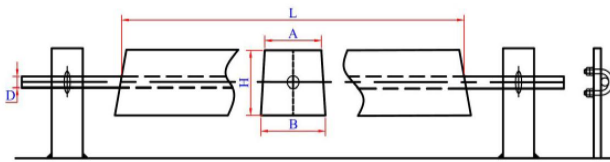
型號 (Type)	尺寸 Size (mm) 高x寬x長 HxWxL	重量(ZN/AL) Weight (Kg) ± 3%
S-9F	30x150x300	9.3
S-10F	40x150x300	12.2

型號 (Type)	尺寸 Size (mm) 高x寬x長 HxWxL	重量(ZN/AL) Weight (Kg) ± 3%
ST-3	40x100x170	2.8 / 1.2
ST-11	56x173x273	10.9 / 4.4

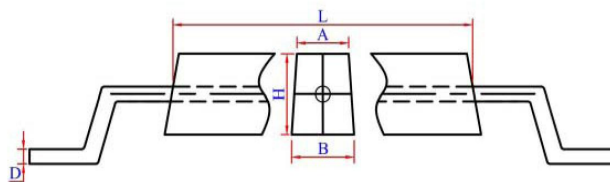
## 壓水艙用鋅/鋁板 (Zinc/Aluminum Anodes for Ballast Tanks)

型號(Type)	尺寸 Size (mm)					重量(ZN/AL) Weight (Kg) ± 3%
	A	B	H	L	D	淨重
U/R-70	66	74	70	250	13	8.5 / 3.2
U/R-85	75	95	85	250	13	12.6 / 4.7
U/R-93	80	90	93	300	13	16.6 / 6.3
U/R 4-X	44	53	49	≤ 1000	13	
U/R 5-X	50	58	55	≤ 800	13	
U/R 6-X	52	70	60	≤ 1000	13	
U/R 6A-X	54	70	63	≤ 1000	13	
U/R 7A-X	50	74	73	≤ 1000	13	
U/R 7-X	70	80	75	≤ 500	13	

### U 型



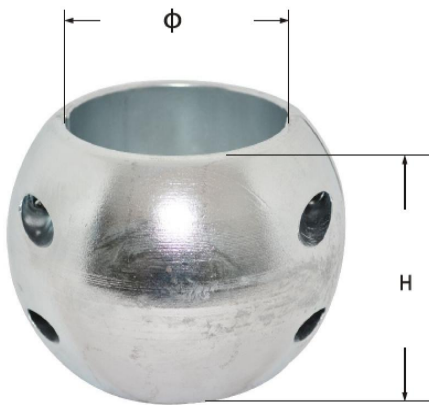
### R 型



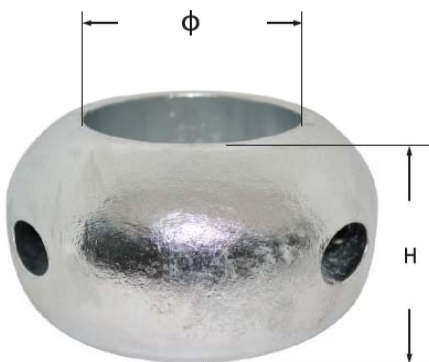
## 遊艇用鋅塊

### 艙軸鋅球 Q (Anodes for Shafts)

4支螺絲系列



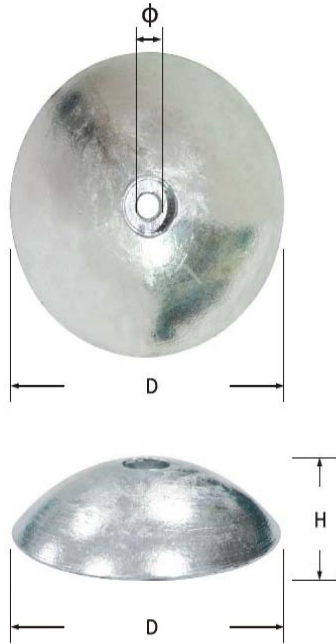
2支螺絲系列



代號 code	內徑 $\phi$ mm (inch)	高度 H(mm)
Q-25	25 ( 1" )	70
Q-28	28 (1-1/8")	70
Q-32	32 (1-1/4")	70
Q-35	35 ( 1-3/8" )	70
Q-38	38 (1-1/2")	82
Q-45	44 (1-3/4")	82
Q-50	50 ( 2" )	82
Q-56	56 (2-1/4")	96
Q-63	63 (2-1/2")	96
Q-70	70 (2-3/4")	91
Q-76	76 ( 3" )	91
Q-80	80 (3-1/8")	100
Q-83	83 (3-1/4")	100
Q-88	88 (3-1/2")	100

代號 code	內徑 $\phi$ mm (inch)	高度 H(mm)
QT-76	76 ( 3" )	71
QT-88	88 (3-1/2")	71
QT-95	95 (3-3/4")	80
QT-100	100 ( 4" )	80
QT-107	107 (4-1/4")	90
QT-113	113 (4-1/2")	90
QT-118	118 (4-5/8")	105
QT-125	125 (4-7/8")	105
QT-128	128 ( 5" )	115
QT-136	136 (5-3/8")	115
QT-146	146 (5-3/4")	127
QT-157	157 (6-1/8")	128
QT-167	167 (6-5/8")	129

## 遊艇用船舵半圓鋅板 YR (Anodes for Rudder)

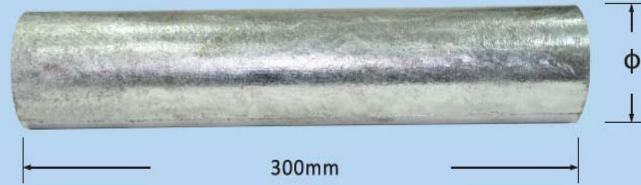


代號 code	直徑D mm (inch)	厚度H (mm)	洞徑φ (mm)	洞形
YR-2	50 ( 2" )	13	6	圓(round) 、 六角形(Hexagon)
YR-3	77 ( 3" )	14.5	7	圓(round) 、 六角形(Hexagon)
YR-4	100 ( 4" )	14.5	7	圓(round) 、 六角形(Hexagon)
YR-4Q	107 ( 4-1/4" )	24	9	圓(round)
YR-5H	138 ( 5-1/2" )	38	11	圓(round)

## 船用特殊鋅塊 (Special anodes for boats)



## 鋅棒 (Zinc Bar)



直徑 φ mm (inch)	直徑 φ mm (inch)	直徑 φ mm (inch)	直徑 φ mm (inch)
9.5 ( 3/8" )	30	55	90 ( 2-1/2" )
12 ( 1/2" )	32 ( 1-1/4" )	58	100 ( 4" )
15.5 ( 5/8" )	35 ( 1-3/8" )	60	114 ( 4-1/2" )
19 ( 3/4" )	38 ( 1-1/2" )	63 ( 2-1/2" )	130 ( 5" )
22 ( 7/8" )	40	70	150 ( 6" )
25 ( 1" )	45 ( 1-3/4" )	76 ( 3" )	
28 ( 1-1/8" )	50 ( 2" )	80 ( 2-1/8" )	

## 主、副機及其它部品用鋅塊 (Zinc anodes for machineries and other parts)



## 安裝注意事項

1. 華司、螺帽要全部換新。
2. 螺帽要鎖緊並與鋅(鋁)板隨時保持緊密接觸狀態。
3. 鋅(鋁)板表面應保持清潔、不能塗漆或沾有其他造成無法導電之物品。
4. 主、副機冷卻用鋅塊，在螺絲的兩端不能同時放橡膠墊片，以免絕緣而失去效果。

## Installation

1. Washers and Nuts all have to be changed for new.
2. Nuts have to be locked tightly and keep in close contact with Zinc (Al) plate at all times.
3. Surface of anodes must keep clean and be free of oil paint or any foreign material that won't block the conduction.
4. The rubber packing of anodes for main and auxiliary machinery coolers should not be installed at both ends of bolts simultaneously, otherwise anodes will be ineffective.



使用前  
Before using



使用後  
After using









**INHERITED  
INTEGRITY  
INNOVATION**

## HEADQUARTERS

 +886 7 7889596  +886 7 7887895  [eric\\_huang@xiang-yi.com](mailto:eric_huang@xiang-yi.com)

 No.873-1, Sec. 1, Guangming Rd., Daliao Dist., Kaohsiung City 831, Taiwan (R.O.C.)

## XIAMEN OFFICE

 +86-592 6511736  +86-592 6511736  +86-183-5028-6553

-OVERSEAS BUSINESS

 +86-130-4591-6709  [robin@xiang-yi.com](mailto:robin@xiang-yi.com)

 No.2 Xiamei Road, Xinyang Industrial estate, Haicang District, Xiamen, Fujian, China.

